

Welcome to Y10 Information Evening

Tuesday 30th September 2025



The Collegiate Trust
Exceptional Education for All



Ms K Marrill

Principal



The Collegiate Trust
Exceptional Education for All



Welcome

Talk 5:00-5.45pm Main Hall

Introduction

Principal: Ms K Marrill

Curriculum information

Deputy Principal: Ms Bigden

Behaviour for Learning

Assistant Principal: Mr David

Digital Platforms/Revision

Assistant Principal: Ms S Chapman

Routines and Expectations

Head of Year: Mr Lee

Preparing for Sixth Form & Extracurricular

Director of Sixth Form: Ms W Case



The Woodcote Way

At Woodcote High School we are a proud and inclusive community that celebrates diversity, embraces a love of learning and inspires ambition in every student. Grounded in respect, we foster high expectations and empower all learners to achieve.



Our Vision

At Woodcote High School we are a proud and inclusive community that celebrates diversity, embraces a love of learning, and inspires ambition in every student. Grounded in respect, we foster high expectations and empower all learners to grow, achieve, and thrive.



**WOODCOTE
HIGH SCHOOL**

14 | Woodcote High School Prospectus

Woodcote High School Prospectus | 15



A Values Driven School



**WOODCOTE
HIGH SCHOOL**



Our Vision & Values

At Woodcote High School we are a proud and inclusive community that celebrates diversity, embraces a love of learning, and inspires ambition in every student. Grounded in respect, we foster high expectations and empower all learners to grow, achieve, and thrive.



Welcoming



Happy



Supportive



Ambitious

Our community aims to succeed at the highest level



Self-Reliant

Our community acts responsibly and strives to be independent



Persevering

Our community works hard and always shows resilience



Inquisitive

Our community is curious and we are life-long learners



Respectful

Our community is considerate and values our diversity



Enthusiastic

Our community loves school life and embraces new challenges

We Are Woodcote | Together we belong, together we learn, together we grow.

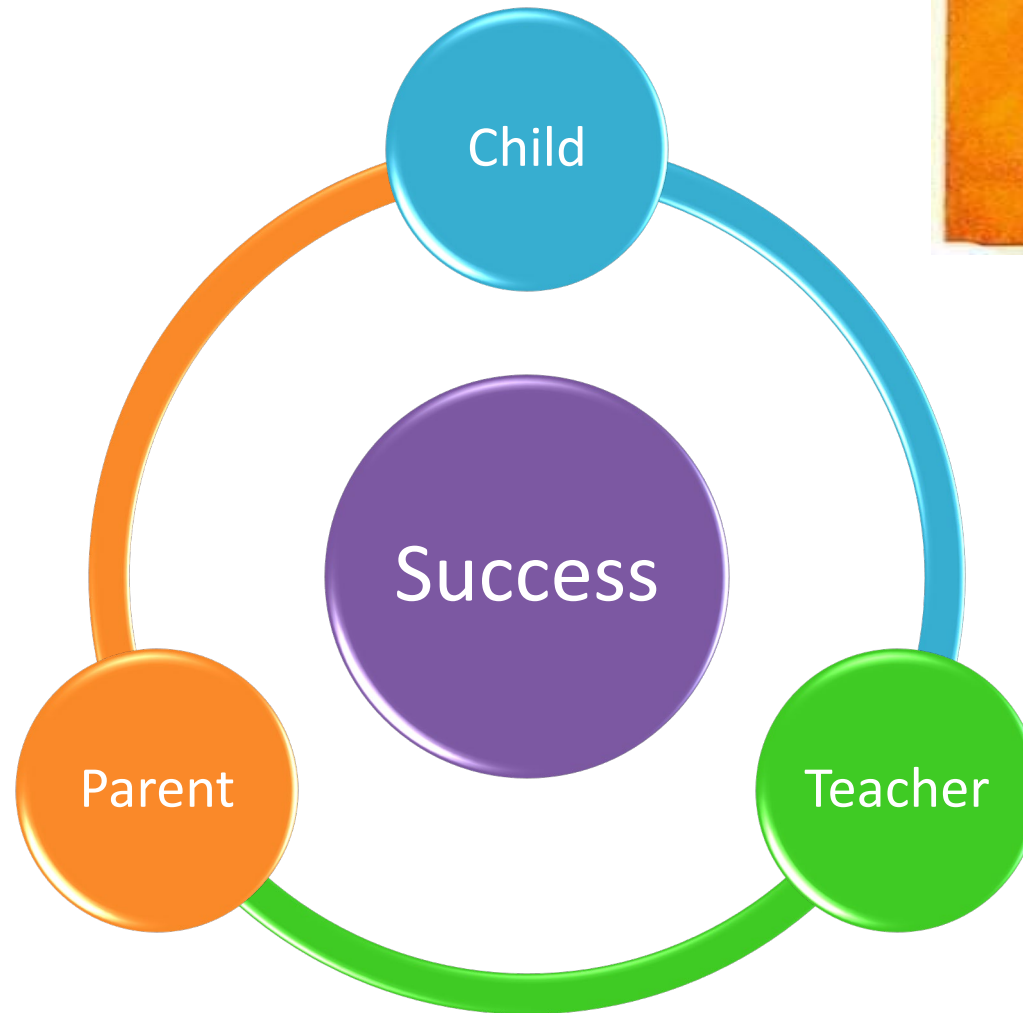


The Collegiate Trust
Exceptional Education for All

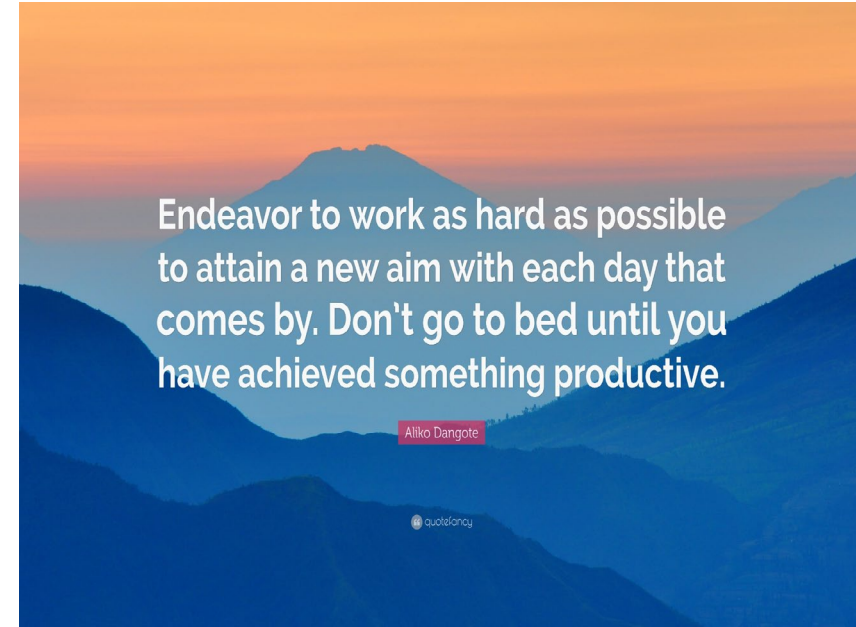


Working in Partnership

“It takes a village to raise a child”



This academic year ...



- New opportunities
- New Challenges
- A chance to be even better



Ms P Bigden

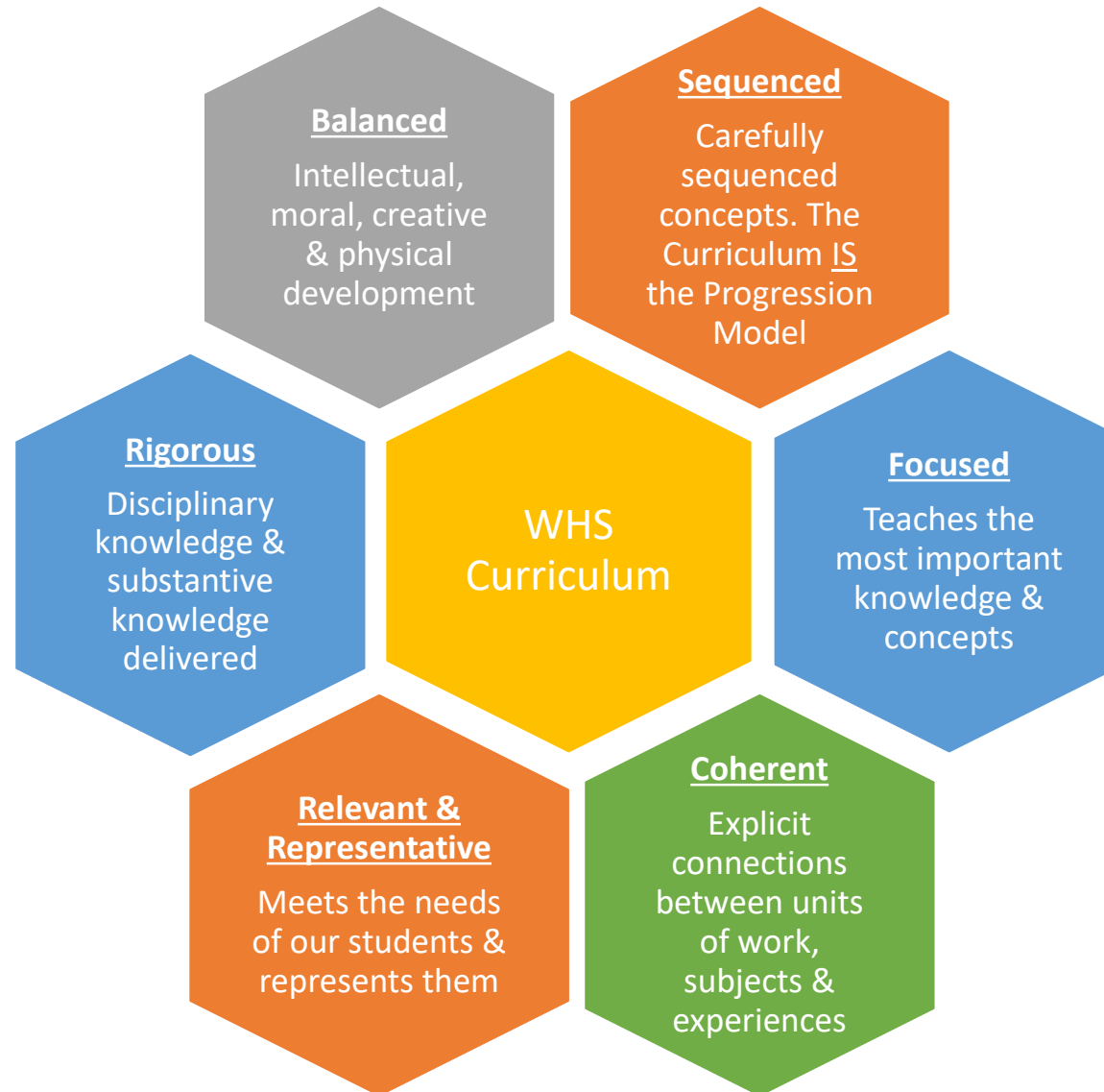
Deputy Principal



The Collegiate Trust
Exceptional Education for All



Our Curriculum



- English
- Maths
- Geo/History
- MFL
- Science OR
- Computer Sci



Teaching Groups

Key Stage 3

- Mixed ability teaching across subjects
- Exception: Maths & MFL which are set

Key Stage 4

- Science, Maths, English, PE are set
- Option Subjects – Mixed Ability



Supporting Your Child at GCSE: Practical Tips

Encourage Consistent Study Habits

- Regular, short, revision routines – start early.
- Create a quiet, comfortable space at home where they can study without distractions.

Invest in Good Revision Resources

- Revision Guides
- Core Exam Texts
- Trusted publishers like CGP, Pearson, or Oxford.
- Encourage your child to use online resources and apps.

Be aware of Key Curriculum and Dates

- Be aware of exam boards, specifications, and assessment formats.
- Support with deadlines for coursework, controlled assessments, and mock exams.



KS4 Assessment & Reporting Model

Subject	Minimum Expected Grade (MEG)	Autumn Term 2 Grade	Current Attitude to Learning (ATL)	Current Behaviour for Learning (BFL)	Current Independent Learning (ILE)
Mathematics	9	9+	1	1	1
Further Maths					
English	7+	8	1	1	1
English Literature	7+	8	1	1	1
Biology	9	9-	1	1	1
Chemistry	9	9+	1	1	1
Physics	9	9+	1	1	1
Design Technology	8-	7	1	1	1
Geography	8+	8+	1	2	1
Spanish	7	7	2	2	1

- WASP reports will be sent home containing the following information:
 - MEG (Minimum Expected Grade)
 - Autumn/Spring Term Data
 - Characteristics for learning scores: ATL, BFL, ILE
- Information about what students are learning each term can be found on our school website, using the curriculum tiles
- For areas of strength and areas for development please refer to the teacher feedback found in your child's exercise book

Descriptor headlines include:

<p style="text-align: center;">Excellent</p> <p style="text-align: center;">1</p>	<p style="text-align: center;">Good</p> <p style="text-align: center;">2</p>	<p style="text-align: center;">Inconsistent</p> <p style="text-align: center;">3</p>	<p style="text-align: center;">Unsatisfactory</p> <p style="text-align: center;">4</p>
---	--	--	--



KS4 Assessment & Reporting Model

Subject	Minimum Expected Grade (MEG)	Autumn Term 2 Grade
Mathematics	9	9+
Further Maths		
English	7+	8
English Literature	7+	8
Biology	9	9-
Chemistry	9	9+
Physics	9	9+
Design Technology	8-	7
Geography	8+	8+
Spanish	7	7

MEG Grades:

- Minimum Expected Grades
 - KS2 Data
 - CAT4 Data
- Ambitious Targets

Termy Data:

- GCSE Grading
- Sub Levels delineate how secure within the grade students are
- In Class Assessments
 - Homework
 - Classwork



Using GCSE Grading

9-1 Grade	Old Grade Equivalent
9 (Top 10% across Nation)	Above A* (Exceptional)
8	A*
7	A
6	High B
5	Strong Pass (High C/Low B)
4	Standard Pass (C)
3	D or E
2	F or G
1	G

Grade Boundaries
change & fluctuate
yearly



Curriculum Maps

Curriculum Subject Maps



ART



BUSINESS



COMPUTER STUDIES



CONSTRUCTION



DRAMA



DT



ECONOMICS



ENGLISH

School
trea
d 202



Key Dates

Autumn	Reports: 16 th December 2025
Spring	Reports: 23 rd March 2026
Summer	Parents' Evening: 22 nd April 2026 End of Year Exams: 1 st June – 19 th June 2026 Reports: 14 th July 2026

End of Year Exams
will be completed
in the Sports Hall

Revision Lists for each subject
will be shared with student &
Parents and will be available on
the website



Mr J David

Assistant Principal



The Collegiate Trust
Exceptional Education for All



Behaviour & Expectations

Students are rewarded for:

- Academic achievement
- Progress
- Participation
- Consistent effort over a period of lessons
- Helping others



Rewards

- Woodcote Stars
- Achievement points
- ASPIRE points
- ASPIRE Raffle
- ASPIRE week recognition
- Star of The Week
- Principal's Breakfast
- End of Term Rewards



Behaviour & Expectations

- We promote high standards of behaviour built around mutual respect, responsibility, and kindness.
- When behaviour falls below these expectations, we use consistent and fair strategies to help students understand the impact of their actions and make positive choices moving forward.



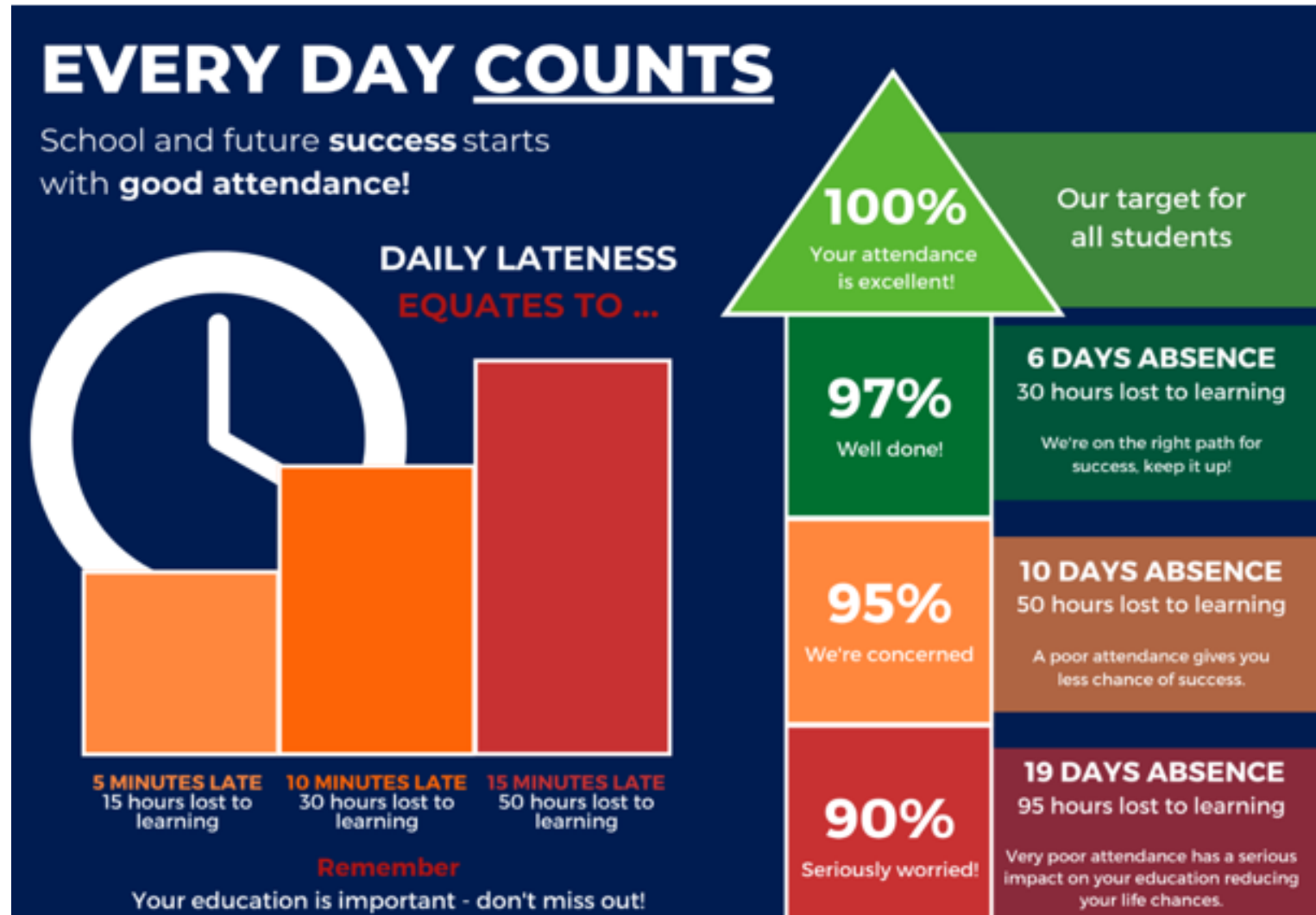
Behaviour & Expectations

- Graduated response to behaviour
- Communication with families is key to supporting behaviour.



Attendance

We expect all students to have at least **98%** attendance each term.



Attendance

SCHOOL ATTENDANCE = FUTURE SUCCESS



95%+
attendance



£350,000
lifetime earnings



Below 95%
attendance



Lower grades
+
fewer opportunities

Regular
attendance

Better
grades

Higher
skills

More
earnings



Every school day missed is a learning opportunity lost, good attendance really does pay off.





Ms Chapman

Assistant Principal: Head of Teaching & Learning



The Collegiate Trust
Exceptional Education for All



Arbor

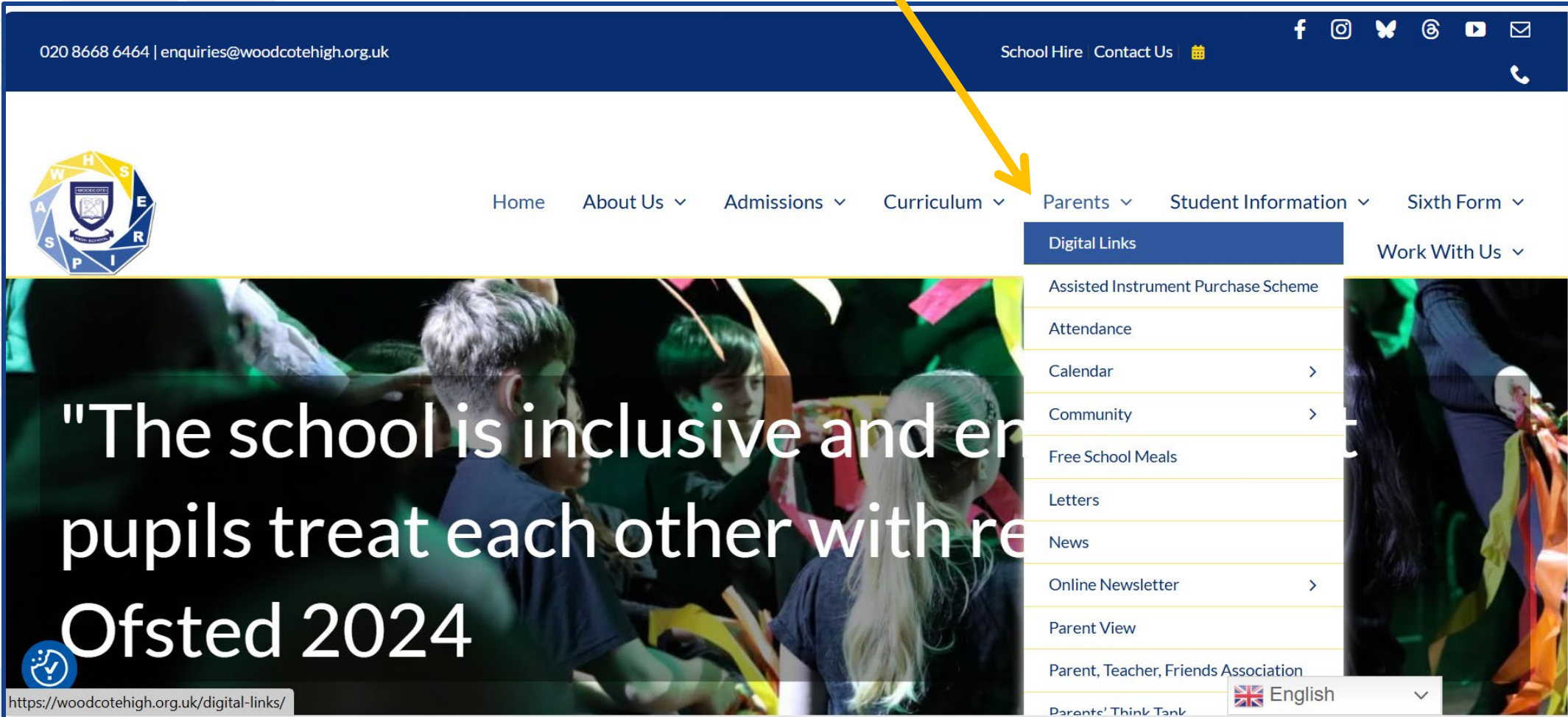


- One platform to view:
 - Homework assignments
 - Attendance
 - Timetables
 - Student details
 - Positive points awarded
 - Negative behaviour incidents
 - Detentions
- Parent and student apps/online portal

Support: Tutors and arbor@woodcotehigh.org.uk



Digital Platforms



020 8668 6464 | enquiries@woodcotehigh.org.uk

School Hire Contact Us

Home About Us Admissions Curriculum Parents Student Information Sixth Form Work With Us

Digital Links

- Assisted Instrument Purchase Scheme
- Attendance
- Calendar >
- Community >
- Free School Meals
- Letters
- News
- Online Newsletter >
- Parent View
- Parent, Teacher, Friends Association
- Parents' Think Tank

English

Ofsted 2024


https://woodcotehigh.org.uk/digital-links/



Digital Platforms


020 8668 6464 | enquiries@woodcotehigh.org.uk School Hire Contact Us

[f](#) [@](#) [t](#) [v](#) [e](#) [t](#)

 Home About Us Admissions Curriculum Parents Student Information Sixth Form Work With Us

Key Stage 4 Digital Learning Platforms

KEY STAGE 3 WHOLE SCHOOL KEY STAGE 5



ARBOR

Link

<https://woodcote-high-school.uk.arbor.sc>

Purpose

Whole School Homework, Attendance, Behaviour and Achievement Recording



Digital Platforms – MS Teams



MS TEAMS

Link

<https://teams.microsoft.com>

Purpose

Whole School Remote Learning, Revision Resources

Description

- A platform that allows teachers to set classwork for students to complete during any periods of remote learning
- In the event of a school closure, we will remove to “live lessons” as swiftly as possible, in which teachers will schedule a lesson during their normal teaching time on this platform. All students can then join the lesson through a Teams Meeting.

Student Login

Students sign in using their school log in details or Microsoft 365

Parent Login

N/A

Source of Support

Tutor / Class Teacher

Key Digital Platforms

Sparx Maths

SPARX MATHS



EDUCAKE

SENECA

SENECA LEARNING



MASSOLIT

gcsepod
an access company

GCSE POD

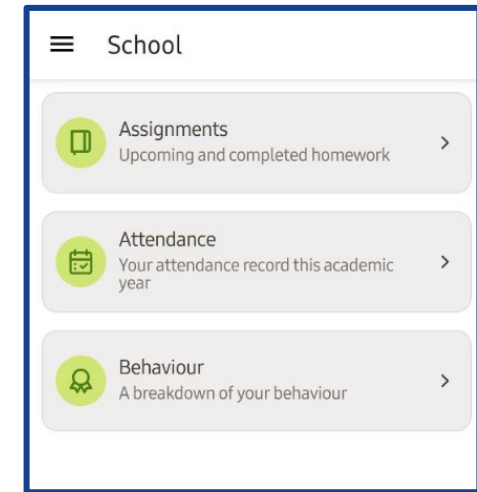


The Importance of Homework

Homework assignments will be regularly set on Arbor, and will appear on your child's "To do" list/Assignments list until they submit it.

Engagement with homework is important because it:

- Reinforces learning and deepens understanding
- Supports recall
- Builds independence and confidence
- Long term exam preparation
- Strengthens organization and time management skills
- Opportunity for extended writing and thinking



Supporting your child with Homework

- Develop a consistent routine
- Provide a place to work (LMC is available in school)
- Minimise distractions
- Ask about their learning and how they are revising/preparing
- Promote early revision habits
- Monitor deadlines and assessment dates
- Encourage them but let them complete the work
- Promote a healthy balance and wellbeing



Mr Lee

Head of Year 10



The Collegiate Trust
Exceptional Education for All



The Role of a Head of Year

- To be responsible for the year group and tutors .
- To be responsible for the efficient and effective management of the year group's pastoral care programme.
- To support the Principal and the Senior Leadership Team.
- To monitor and support the overall progress and development of students within the year group.

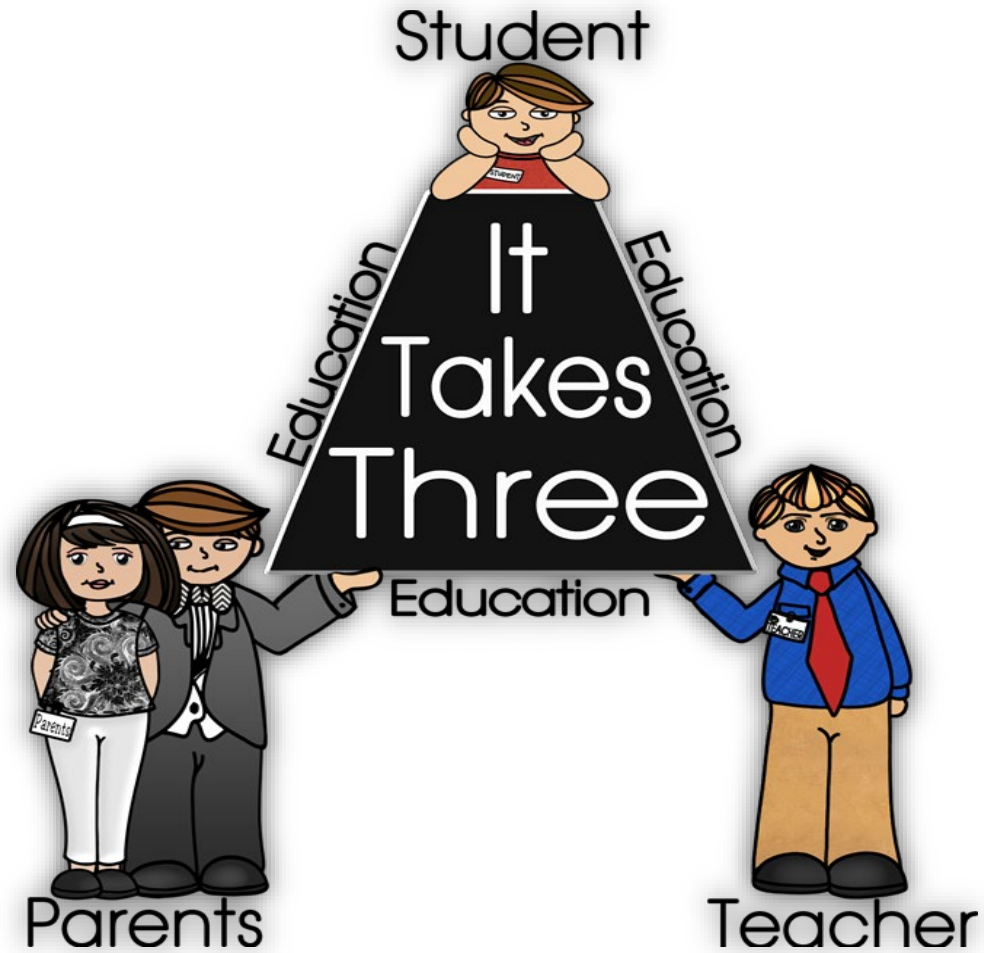


Key Focus for the year

- Start of KS4 and GCSE journey
- Consistency ("Sweating the small stuff")
- Perfect uniform, including PE kit – plain white polo top and plain navy-blue bottoms/sweatshirt
- Fully equipped with a pencil case and equipment
- Outstanding behaviour and conduct both inside and outside of lessons
- Punctuality
- Following instructions the first time
- **Be prepared be successful**



‘No individual can win a game by themselves’



Belonging to the school community

- Feeling included, respected, and valued
- Taking pride in their school and its values
- Building positive friendships and relationships
- Setting high goals for themselves
- Working hard to achieve success in school
- Preparing for future opportunities beyond education
- Excellent behaviour in and out of the classroom
- Respectful language and actions
- Resilience



How can **you** support your child's learning?

You provide the foundations of an outstanding learning experience

Proactive

Look for opportunities to explore further to support learning

Engaged

Build positive relationship with FT. Attend Parents' evenings

Supportive

Monitor homework, deadlines, critical friend

Informed

Check school emails, social media and website

Interested

Ask how the day went, what were the successes?

Attend

Ensure your child is in school, on time, every day

Prepared

Correct uniform, equipment & sustenance

Organised

Ready the night before (bag, uniform, homework)



Social Media and Technology

**Group
chats**

Keep an eye on your child's social
media accounts and use of
technology

**Tik Tok /
Instagram**



Some Important Dates

- **End of Year exams – June 2026**
- **Work experience – July 2026**
- **Rewards activities – Termly**
- **Parent's evening – April 2025**
- **Silver tie presentations - Termly**
- **Principal's Breakfast - Termly**





Ms Case

Assistant Principal: Director of Sixth Form



The Collegiate Trust
Exceptional Education for All





Woodcote High School Headline Figures

We are proud to share that 2025 has been our best year of A-Level Results ever!

- 17% at **A–A***
- 46% at **A–B**
- Over 70% achieved **A–C** grades
- **99%** at **A* - E**





Woodcote High School Headline Figures

We are proud to share that 2025 has been our best year of Vocational Results ever!

50% achieving **Distinction or Distinction***

93% at **Merit or above**

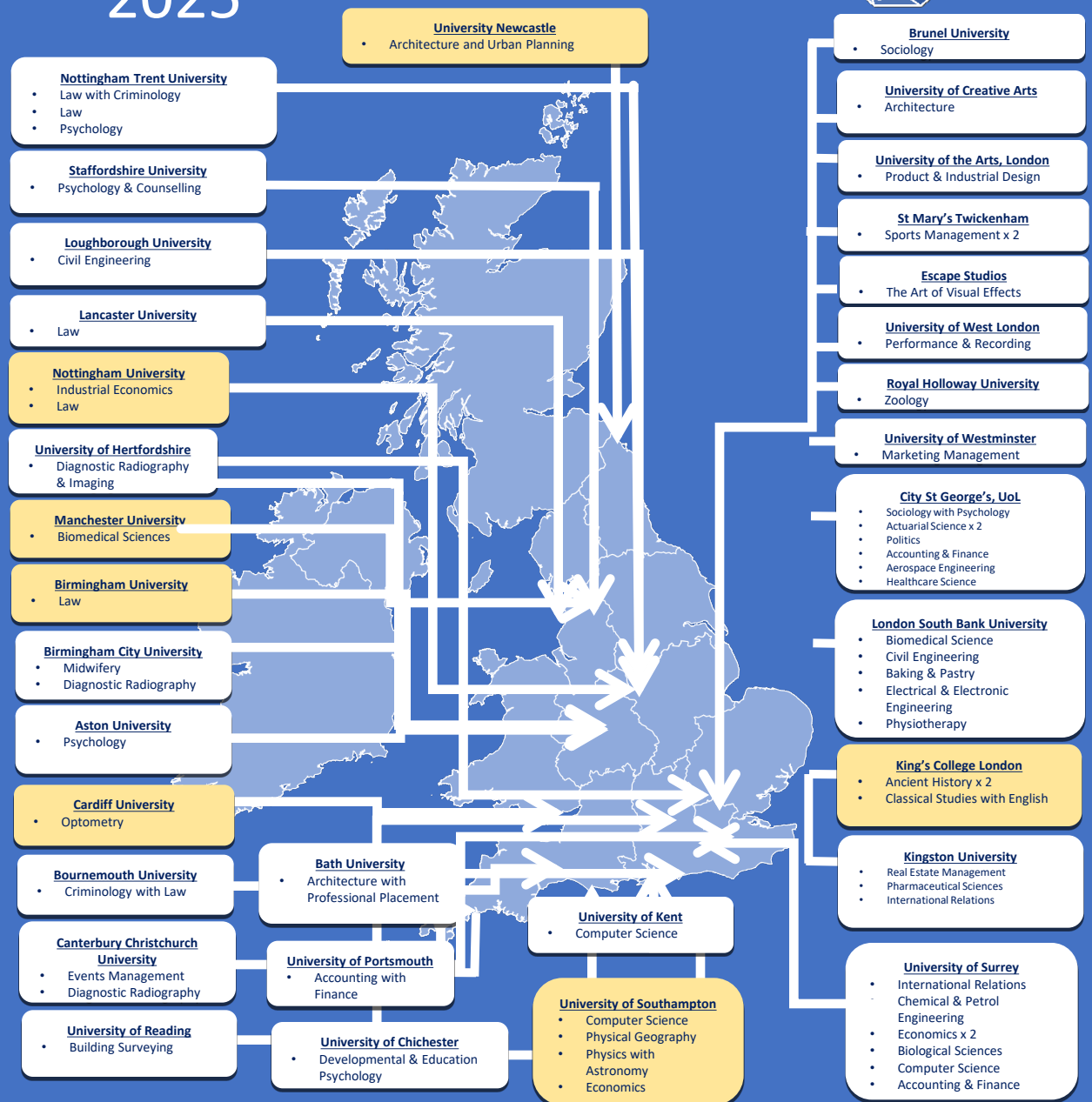
100% **Pass or above**

These results are **well above the national averages.**



University Destinations

2025



Extra-Curricular Opportunities

After School

Day	Club	Staff	Location
Monday	Lego Club	DSH	Library
	U12 (Yr 7) Boys Football	Mr Ansah	Main Field
Tuesday	Crochet Club	DSH	Library
	Yr8-11 Trampolining	BPO	Main Hall (Back)
	U13 Boys Football	Mr Ansah	Main Field
	KS4 Netball	DMC	Playground
	Fitness Club (Invite Only)	RWI	Fitness Suite
	Homework Club	AKI	LMC
Computing	ATO	ICT 2 and 3	
Robotics (Yr8-11, Week B)	ATO	ICT 2 and 3	
Wednesday	Girls Football (All Years)	ADS/FMO	5-Aside Pitch/Main Field
	Step Into Dance	Benji S	Dance Studio
	Fitness Club (Invite Only)	SGO	Fitness Suite
	Science Club (Week B Only)	RWI	LAB 3
	Homework Club	AKI	LMC
Thursday	U14/15 (Yr 9 and 10) Boys Football	Mr Ansah	Main Field
	KS3 Netball	DMC/TWA	Playground
	Yr 7 Trampolining	BPO	Main Hall (Back)
	Fitness Club	BVA	Fitness Suite
	Homework Club	AKI	LMC
Skill Builders (Invite Only)	AKI	ICT 4	
Friday	Cross Country	BTA	Track
	U12/13 (Yr 7 and 8) Basketball	JHE	New Sports Hall
	Bar Mock Trials	OCH	Room 9
	Homework Club	AKI	LMC

