

Welcome to Y7 Information Evening

Wednesday 24th September 2025



The Collegiate Trust
Exceptional Education for All

We Are Woodcote | *Together we belong, together we learn, together we grow.*



Ms K Marrill

Principal



The Collegiate Trust
Exceptional Education for All

We Are Woodcote | *Together we belong, together we learn, together we grow.*



Welcome

Talk 5.00-5.45pm Main Hall

Introduction

Principal: Ms K Marrill

Curriculum Information

Deputy Principal: Ms P Bigden

Behaviour for Learning

Deputy Principal: Mrs M Edwards/Mr David

Digital Platforms/Homework

Assistant Principal: Ms S Chapman

Working in Partnership & Extracurricular

Head of Year: Ms Foley



Welcome to the Class of 2032



We Are Woodcote | *Together we belong, together we learn, together we grow.*



This academic year ...



The Woodcote Way

At Woodcote High School we are a proud and inclusive community that celebrates diversity, embraces a love of learning and inspires ambition in every student. Grounded in respect, we foster high expectations and empower all learners to achieve.



Our Vision

At Woodcote High School we are a proud and inclusive community that celebrates diversity, embraces a love of learning, and inspires ambition in every student. Grounded in respect, we foster high expectations and empower all learners to grow, achieve, and thrive.

WOODCOTE HIGH SCHOOL



A Values Driven School



**WOODCOTE
HIGH SCHOOL**



Our Vision & Values

At Woodcote High School we are a proud and inclusive community that celebrates diversity, embraces a love of learning, and inspires ambition in every student. Grounded in respect, we foster high expectations and empower all learners to grow, achieve, and thrive.



Welcoming



Happy



Supportive



Ambitious

Our community aims to succeed at the highest level



Self-Reliant

Our community acts responsibly and strives to be independent



Persevering

Our community works hard and always shows resilience



Inquisitive

Our community is curious and we are life-long learners



Respectful

Our community is considerate and values our diversity



Enthusiastic

Our community loves school life and embraces new challenges

We Are Woodcote | Together we belong, together we learn, together we grow.

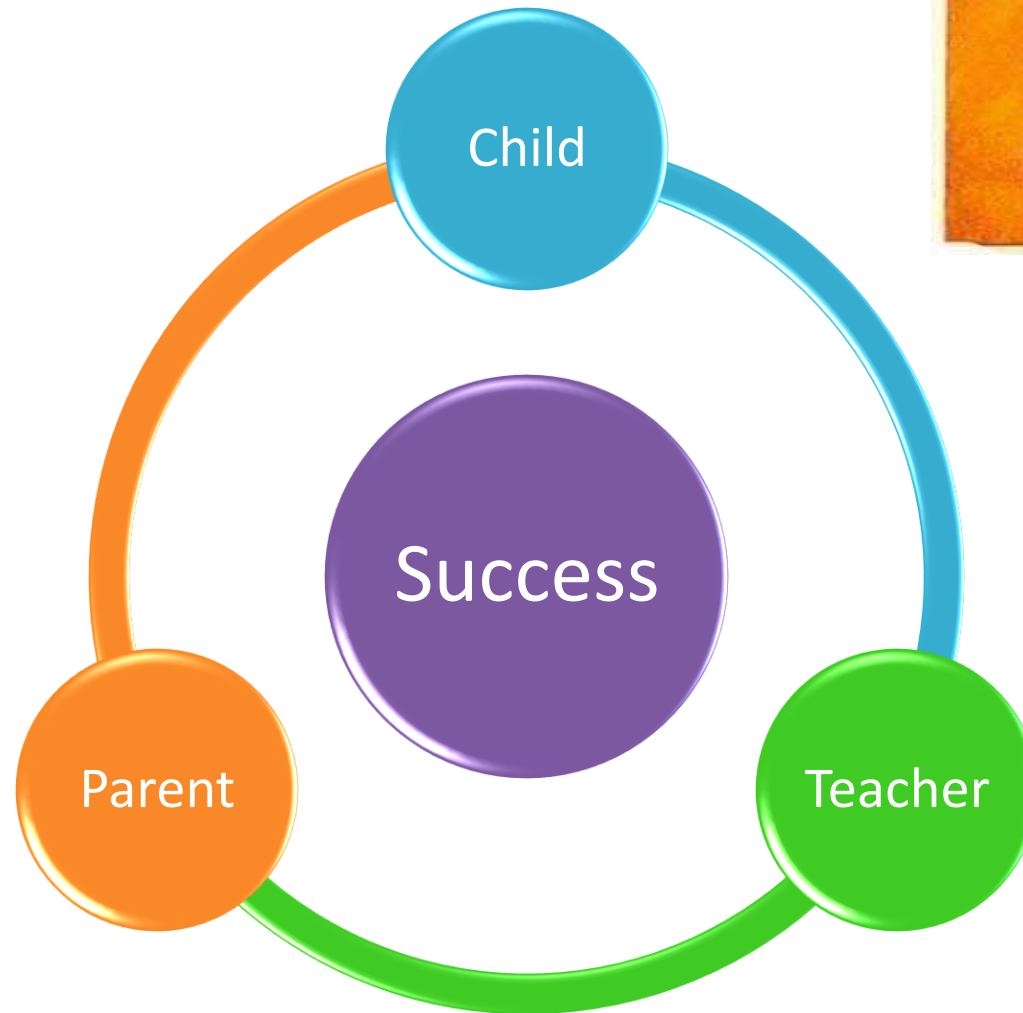


The Collegiate Trust
Exceptional Education for All



Working in Partnership

“It takes a village to raise a child”



We Are Woodcote | *Together we belong, together we learn, together we grow.*



Ms P Bigden

Deputy Principal

Quality of Education

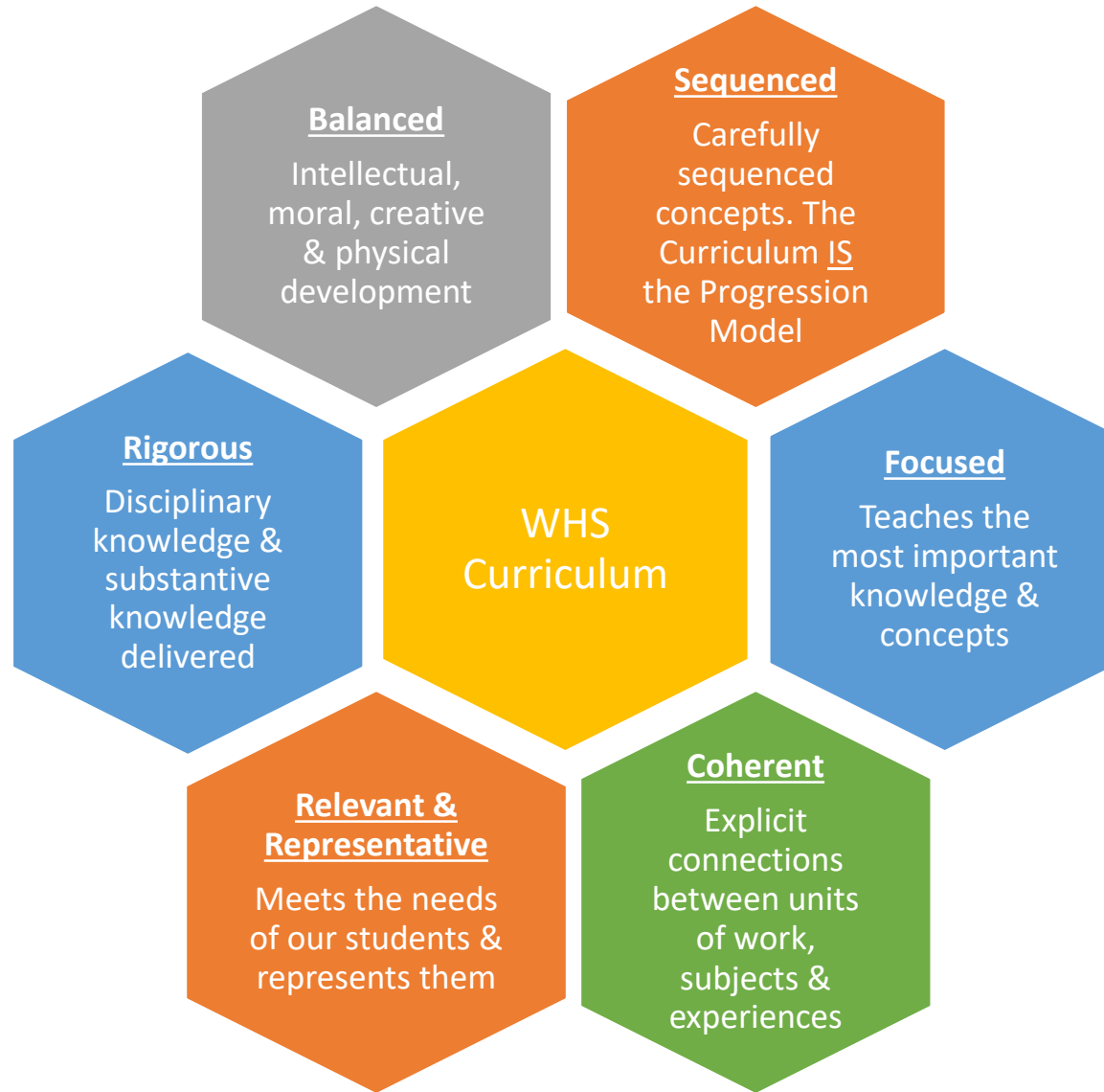


The Collegiate Trust
Exceptional Education for All

We Are Woodcote | *Together we belong, together we learn, together we grow.*



Our Curriculum



Teaching Groups

Key Stage 3

- Mixed ability teaching across subjects
- Exception: Maths which is set

Key Stage 4

- Science, Maths, English, PE are set
- Option Subjects – Mixed Ability



KS3 Assessment & Reporting Model

Assessment Performance

- **KS3:** Percentage grade based on curriculum-aligned assessments

Cohort Average (KS3 only)

- The provides a benchmark showing the average percentage achieved in each subject across the student's cohort

Progress Indicator (KS3 only)

- Available from **Term 2** onward; it compares current performance to the previous term's and indicates whether the student is making progress that is:
- *Above Expected* / *Expected* / *Below Expected*



KS3 Assessment & Reporting Model

- Students will be assessed across the year. This can be in many forms such as:
 - end of unit assessments
 - practical work
 - classwork
 - homework tasks
- The focus for feedback in class will be on strengths and areas for development, rather than grades for KS3
- Information about what students' will learn each term can be found on our school website
- For areas of strength and areas for development - please refer to the teacher feedback found in your child's exercise book



WASP Reports: Woodcote Assessment of Student Progress

Current Attendance: 97.0% Number of Lates: 0
Achievement Points: 779 Behaviour Points: 0

Termly Assessment Percentage:
Percentage achieved in the most recent class assessment in each subject.

Percentage of cohort average:
Providing a benchmark showing the average percentage achieved in each subject across the cohort.

Progress Indicator: comparing current performance to the previous term's and indicates whether the student is making expected levels of progress.

Subject	Spring Assessment %	Summer Assessment %	Summer Cohort Average Assessment %	Progress Indicator	ATL Summer	BFL Summer	ILE Summer
English	80%	63%	51%	Expected	Excellent	Excellent	Excellent
Mathematics	75%	93%	68%	Expected	Excellent	Excellent	Good
Science	90%	90%	68%	Expected	Excellent	Excellent	Excellent
Art	65%	80%	67%	Expected	Excellent	Excellent	Excellent
Computer Science	39%	58%	53%	Expected	Excellent	Excellent	Good
Design Technology	63%	63%	54%	Expected	Good	Good	Good
Drama	55%	65%	70%	Expected	Good	Excellent	Good
Geography	90%	82%	63%	Expected	Excellent	Excellent	Good
History	74%	86%	66%	Expected	Excellent	Excellent	Excellent
Music	69%	78%	66%	Expected	Excellent	Excellent	Excellent
Physical Education	38%	38%	45%	Expected	Excellent	Excellent	Excellent
PSHCE	N/A	N/A	N/A	N/A	Excellent	Good	Good
Religious Studies	63%	66%	44%	N/A	Good	Good	Good
Spanish	78%	82%	67%	Expected	Excellent	Excellent	Excellent

Characteristics for learning scores:
Attitude to Learning; Behaviour for Learning; Independent Learning



Curriculum Maps

Curriculum Subject Maps



ART



BUSINESS



COMPUTER STUDIES



CONSTRUCTION



DRAMA



DT



ECONOMICS



ENGLISH



School
treas
d 202

Learning Scores

In addition to academic progress, a score for the following, will be awarded:

- **Attitude to Learning (ATL)**
- **Behaviour for Learning (BfL)**
- **Independent Learning (ILE)**

These are important indicators about students' progress covering a wide range of characteristics that promote success.

Descriptor headlines include:

Excellent 1	Good 2	Inconsistent 3	Unsatisfactory 4
------------------------------	-------------------------	---------------------------------	-----------------------------------



	Excellent 1	Good 2	Inconsistent 3	Unsatisfactory 4
Attitude to Learning (ATL)	Demonstrates an excellent attitude; determined, focused, and persistent. Punctual, well-prepared, and ready to learn. Makes strong efforts with challenges and consistently goes above and beyond.	Demonstrates a good attitude; punctual, well-prepared, and ready to learn. Remains focused and generally positive in lessons, taking an active part in class activities. Always willing to try and usually aims to improve work.	Attitude is inconsistent. Punctuality, preparation, and readiness to learn require improvement. Focus is sometimes maintained, but distractions can affect progress. Interest is often lost when work is challenging or less engaging.	Attitude is often negative. Tends to avoid challenging work and does not consistently show interest in producing their best efforts. Greater focus and effort are needed in lessons.
Behaviour for Learning (BFL)	Behaviour is excellent; thoughtful and determined, always striving to achieve the best with set work. Sets a positive example for others.	Behaviour is good. Follows instructions, is considerate towards others, and remains mainly focused on achieving the best possible outcome.	Behaviour is inconsistent. Acceptable when engaged in enjoyable work, but focus is often lost when tasks are more difficult or challenging.	Behaviour is unsatisfactory. Engagement is inconsistent, with a tendency to give up when work is challenging. Focus is often lost, which can lead to distraction for themselves and others.
Independent Learning (ILE)	Homework is always completed to the best standard. Seeks clarification when unsure, sometimes outside of lessons. Occasionally undertakes extra reading and additional work independently.	Homework is completed to a good standard and deadlines are met. Standards could be improved further with additional time and effort. Aware of how to access support outside of lessons if needed.	Homework is sometimes completed to an acceptable standard and deadlines are not always met. A higher standard is achievable with greater time and effort. Support outside lessons should be sought when required.	Homework is usually not completed on time or to an acceptable standard. Responsibility for completing work is not yet being taken.

Importance of Reading

	Child A	Child B	Child C
Reading per day	15+ minutes	0-5 minutes	1 minute
Time per school year	3600 minutes	900 minutes	180 minutes
Gains	Accelerated reading gains	Sluggish gains; below national average	Minimal if any gains - well below the national average
Words per school year	1,800,000	282,000	8,000
Percentile of test scores	90 th (likely score better than 90% of their peers on standardised tests)	50 th	10 th



Importance of Reading

Reading Programme

THE IMPORTANCE OF READING

WHAT WE ARE READING

READING RECOMMENDATIONS

READ LIKE A...

The Importance of Reading

'The Reading Framework' - July 2023 states that, "Reading is fundamental to education. Proficiency in reading, writing and spoken language is vital for pupils' success."

about the books their child is reading to encourage engagement & pleasure.

Also suggests 'recommended reads' for each Year Group.



Key Dates 2025-26

Autumn	CAT Tests: 15 th – 18 th September 2025 Settling in Report: 16 th October 2025 (ATL, BFL, ILE only) Core subjects, Geography, History and MfL) Reports: 16 th December 2025 Parents' Evening: 27 th November 2025
Spring	Reports: 23 rd March 2026
Summer	End of Year Exams: 1 st June – 19 th June 2026 Reports: 14 th July 2026



PHSE & RSE at Woodcote

What is PSHCE / RSE –Statutory education that gives pupils the knowledge, skills and attributes they need to keep themselves healthy and safe and to prepare them for life and work in modern Britain.

The curriculum at Woodcote has been created following the 2022 parent consultation and continues to be reviewed annually to meet our student needs.

How are the topics covered?

- PSHCE Lessons
- Form time activities
- Discrete Lessons
- Assemblies
- Cross-curricular lessons (i.e. Science, food tech, media etc)
- Workshops / speaker opportunities

Is it compulsory? Parents have the right to withdraw students from Sex education but do not have the right to withdraw from Relationships Education. Please have a conversation with the Head of Year if you have questions or concerns (further information can be found on the DFE website).

What will my child learn?

There is an extensive list of topics covered, these can be underpinned by the following themes;

- Respectful relationships including friendships.
- Online and the media
- Being safe
- Intimate and sexual relationships, inc sexual health
- Mental Well-being
- Drugs alcohol and tobacco
- Physical health and fitness
- Basic first aid
- British values

What do I need to do next?

- Browse the curriculum offer (on the website).
- Read the school RSE policy (on the website).
- Look out for Autumn DFE update.
- Use information sent home throughout the year as an opportunity to have further conversations with your child.
- Do not hesitate to ask questions or for support.



Mrs M Edwards

Deputy Principal
Student Wellbeing:
Behaviour & Attitudes



The Collegiate Trust
Exceptional Education for All

We Are Woodcote | *Together we belong, together we learn, together we grow.*



Behaviour & Expectations

Students are rewarded for:

- Academic achievement
- Progress
- Participation
- Consistent effort over a period of lessons
- Helping others



Rewards

- Woodcote Stars
- Achievement points
- ASPIRE points
- ASPIRE Raffle
- ASPIRE week recognition
- Star of The Week
- Principal's Breakfast
- End of Term Rewards



Behaviour & Expectations

- We promote high standards of behaviour built around mutual respect, responsibility, and kindness.
- When behaviour falls below these expectations, we use consistent and fair strategies to help students understand the impact of their actions and make positive choices moving forward



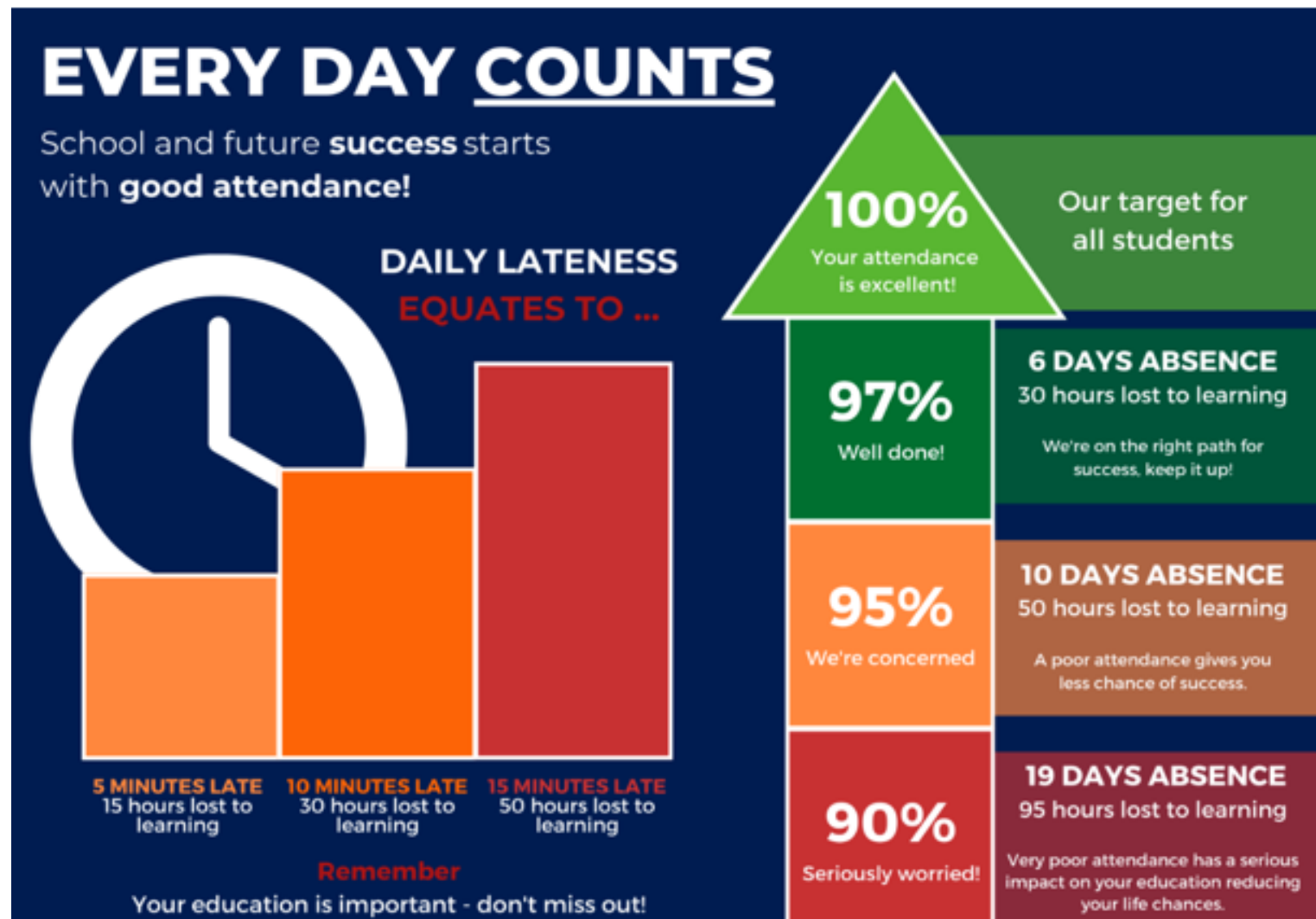
Behaviour & Expectations

- Graduated response to behaviour
- Communication with families is key to supporting behaviour.



Attendance

We expect all students to have at least **98%** attendance each term.



Attendance

SCHOOL ATTENDANCE = FUTURE SUCCESS



95%+
attendance



£350,000
lifetime earnings



Below 95%
attendance



Lower grades
+
fewer opportunities

Regular
attendance

Better
grades

Higher
skills

More
earnings



Every school day missed is a learning opportunity lost, good attendance really does pay off.





Ms S Chapman

Assistant Principal

Teaching & Learning



The Collegiate Trust
Exceptional Education for All

We Are Woodcote | *Together we belong, together we learn, together we grow.*



Arbor

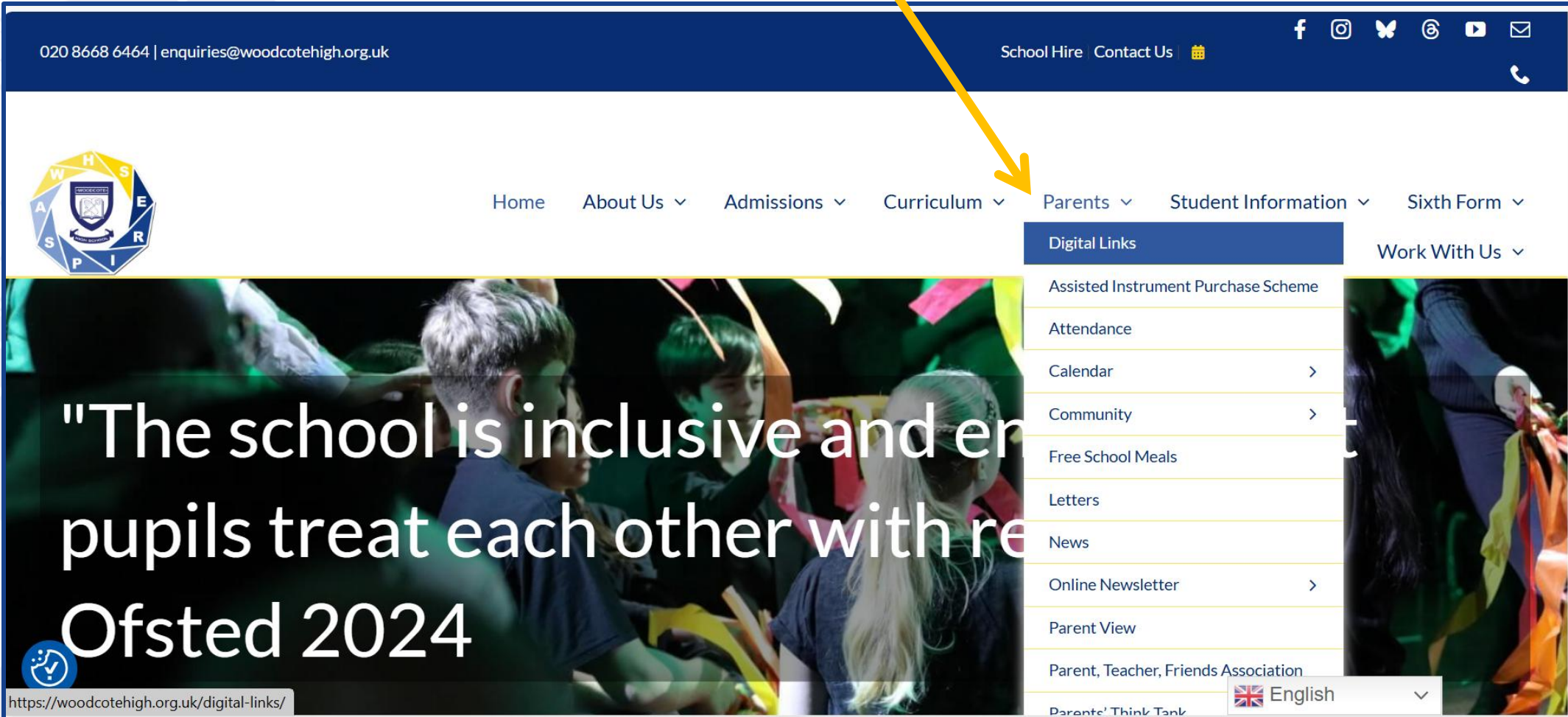
- One platform (App or website) to view:
 - Homework assignments
 - Attendance
 - Timetables
 - Student details
 - Positive points awarded
 - Negative behaviour incidents
 - Detentions

Support: Tutors and arbor@woodcotehigh.org.uk

If homework cannot be "submitted" please contact the relevant teacher.



Digital Platforms



020 8668 6464 | enquiries@woodcotehigh.org.uk

School Hire Contact Us

Home About Us Admissions Curriculum Parents Student Information Sixth Form Work With Us

Digital Links

- Assisted Instrument Purchase Scheme
- Attendance
- Calendar >
- Community >
- Free School Meals
- Letters
- News
- Online Newsletter >
- Parent View
- Parent, Teacher, Friends Association
- Parents' Think Tank

English

https://woodcotehigh.org.uk/digital-links/

"The school is inclusive and ensures all pupils treat each other with respect"

Ofsted 2024



Digital Platforms


020 8668 6464 | enquiries@woodcotehigh.org.uk

School Hire Contact Us

Home About Us Admissions Curriculum Parents Student Information Sixth Form

Key Stage 3 Digital Learning Platforms

WHOLE SCHOOL KEY STAGE 4 KEY STAGE 5

 ARBOR

Link

<https://woodcote-high-school.uk.arbor.sc>

English

Digital Platforms – MS Teams



MS TEAMS

Link

<https://teams.microsoft.com>

Purpose

Whole School Remote Learning, Revision Resources

Description

- A platform that allows teachers to set classwork for students to complete during any periods of remote learning
- In the event of a school closure, we will remove to “live lessons” as swiftly as possible, in which teachers will schedule a lesson during their normal teaching time on this platform. All students can then join the lesson through a Teams Meeting.

Student Login

Students sign in using their school log in details or Microsoft 365

Parent Login

N/A

Source of Support

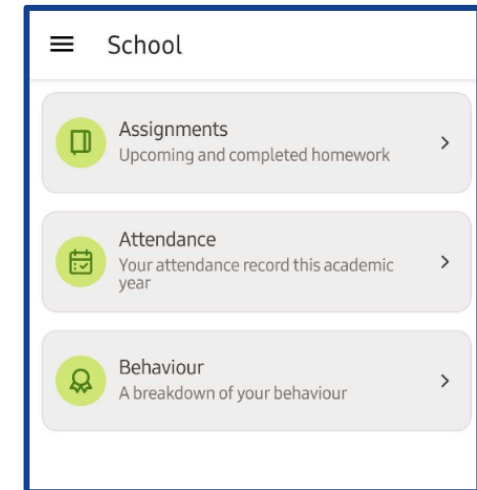
Tutor / Class Teacher

The Importance of Homework

Homework assignments will be regularly set on Arbor, and will appear on your child's "To do" list/Assignments list until they submit it.

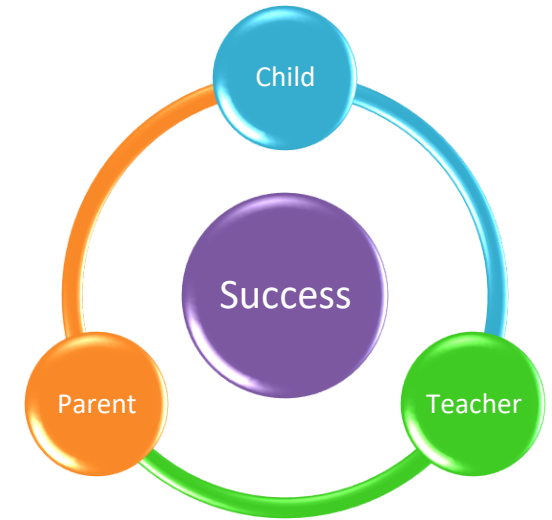
Engagement with homework is important because it:

- Reinforces learning and supports recall
- Builds independence
- Helps students to prepare for assessments
- Strengthens organization and time management skills
- Connects School and Home



Supporting your child with Homework

- Develop a consistent routine
- Provide a place to work (LMC is available in school)
- Minimise distractions
- Ask about their learning
- Encourage them but let them complete the work
- Show them how to create a healthy balance



Ms B Foley

Head of Year 7



The Collegiate Trust
Exceptional Education for All

We Are Woodcote | *Together we belong, together we learn, together we grow.*

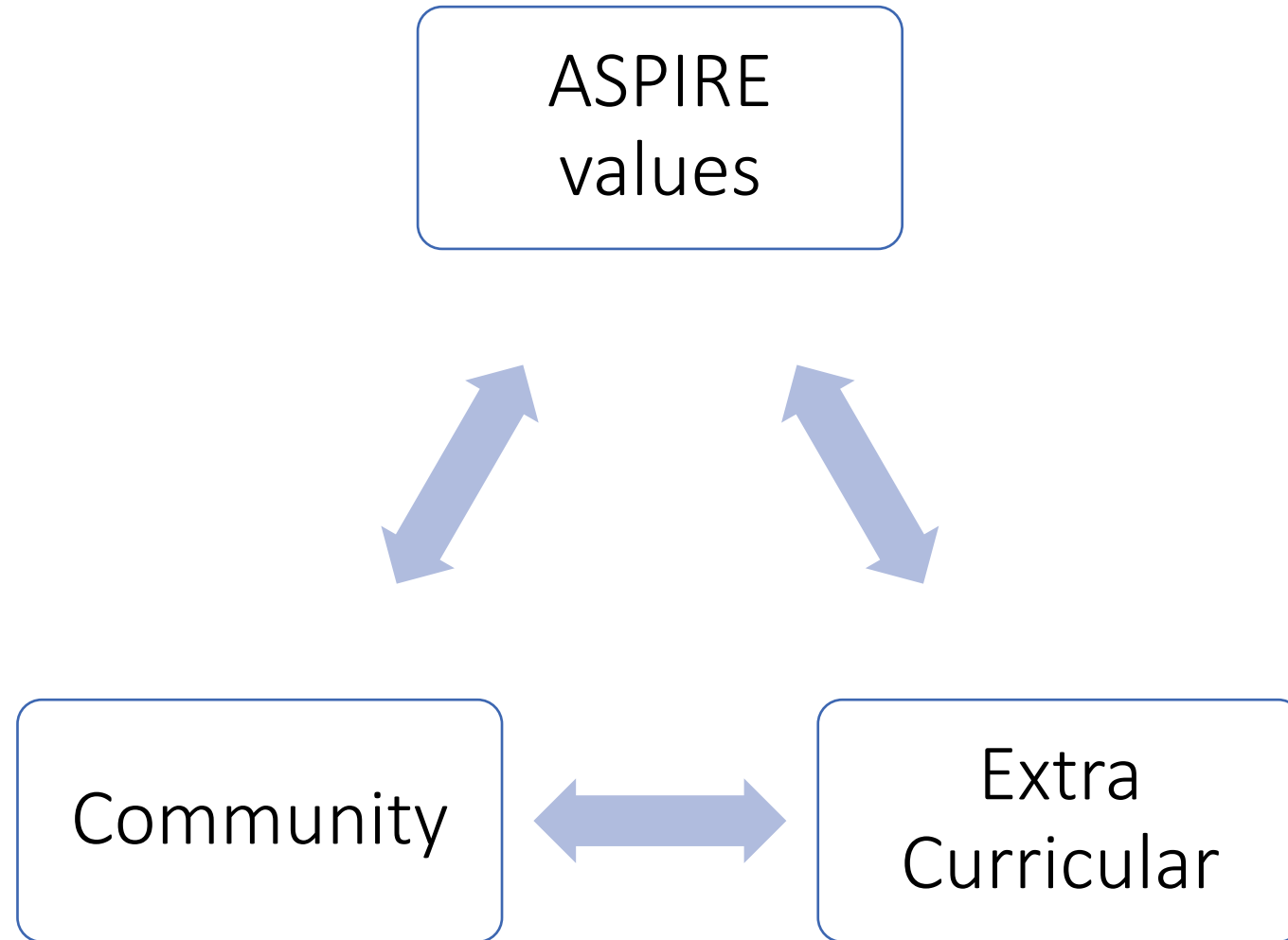


The Role of a Head of Year

- To be responsible for the Year Group and Tutors
- To be responsible for the efficient and effective management of the year group's pastoral care programme
- To support the Principal and SLT
- To monitor and support the overall progress and development of students within the year group



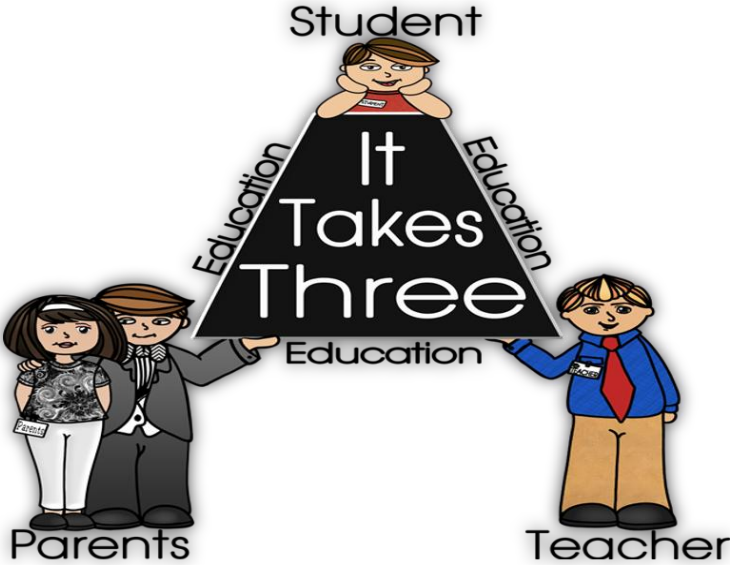
Year 7 Priorities



Home-School Agreement



SCAN ME!

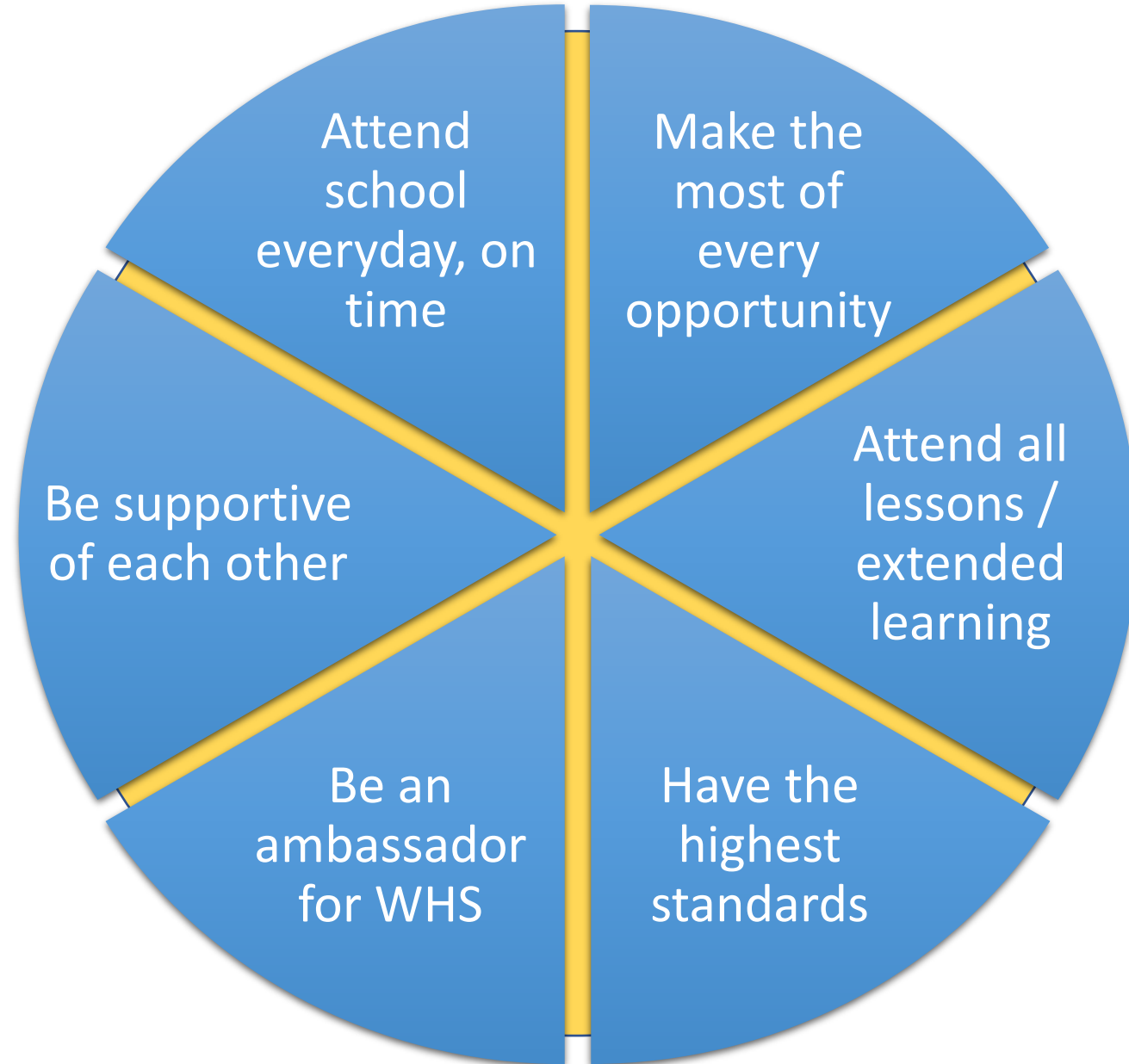


We Are Woodcote | Together we belong, together we learn, together we grow.

We Are Woodcote | Together we belong, together we learn, together we grow.



The Role of the Students



Be the best version of yourself

- Kindness and empathy
- Excellent Attendance
- Excellent behaviour in and out of the classroom
- Active participation in lessons and extra-curricular
- Respectful language and actions
- Ambition
- Resilience



Social Media and Technology

Keep an eye on your child's social media accounts and use of technology



Extra-Curricular Opportunities

Lunch Time

Day	Club	Staff	Location
Monday	Netball/Basketball	JHE	New Sports Hall
Tuesday	Netball/Basketball	Mr Ansah	New Sports Hall
Wednesday	Film Club Gospel Choir Badminton	LDW/HCO RQA ADS	ICT 4 DS2 New Sports Hall
Thursday	Netball/Basketball (Girls only)	BPO/TWA	Old Sports Hall
Friday	Netball/ Basketball	SKI	New Sports Hall



Extra-Curricular Opportunities

After School

Day	Club	Staff	Location
Monday	Lego Club	DSH	Library
	U12 (Yr 7) Boys Football	Mr Ansah	Main Field
Tuesday	Crochet Club	DSH	Library
	Yr8-11 Trampolineing	BPO	Main Hall (Back)
	U13 Boys Football	Mr Ansah	Main Field
	KS4 Netball	DMC	Playground
	Fitness Club (Invite Only)	RWI	Fitness Suite
	Homework Club	AKI	LMC
	Computing	ATO	ICT 2 and 3
Robotics (Yr8-11, Week B)	ATO	ICT 2 and 3	
Wednesday	Girls Football (All Years)	ADS/FMO	5-Aside Pitch/Main Field
	Step Into Dance	Benji S	Dance Studio
	Fitness Club (Invite Only)	SGO	Fitness Suite
	Science Club (Week B Only)	RWI	LAB 3
	Homework Club	AKI	LMC
Thursday	U14/15 (Yr 9 and 10) Boys Football	Mr Ansah	Main Field
	KS3 Netball	DMC/TWA	Playground
	Yr 7 Trampolineing	BPO	Main Hall (Back)
	Fitness Club	BVA	Fitness Suite
	Homework Club	AKI	LMC
	Skill Builders (Invite Only)	AKI	ICT 4
Friday	Cross Country	BTA	Track
	U12/13 (Yr 7 and 8) Basketball	JHE	New Sports Hall
	Bar Mock Trials	OCH	Room 9
	Homework Club	AKI	LMC



A Magical Opportunity....

- Brings our study of *Harry Potter and the Cursed Child* to life for our students
- Creative writing workshop with professional writers
- Inspires imagination and develops literacy skills
- Insight into film, theatre, and the creative industries
- A memorable and educational experience for all students
- Engenders community & enjoyment



Year 7 Tutor Team

Form	Tutor	Email
7D	Ms Dattoo-Wigmore	fDattoo-Wigmore@woodcotehigh.org.uk
7E	Ms Tollworthy	htollworthy@woodcotehigh.org.uk
7F	Ms Lawrence	hlawrence@woodcotehigh.org.uk
7G	Mr Duke	aduke@woodcotehigh.org.uk
7W	Mr Harley	rharley@woodcotehigh.org.uk
7X	Ms Litchmore	vlitchmore@woodcotehigh.org.uk
7Y	Ms Cox	hcox@woodcotehigh.org.uk
7Z	Ms Lopez	rlopez@woodcotehigh.org.uk

